

Tri-County Concerts Emerging Artists Series

71ST SEASON • 2011-2012



October 23
Daria Rabotkina, piano



February 5
Svetlana Smolina, piano



March 11
Deadalus Quartet



April 15
Jonathan Beyer, baritone

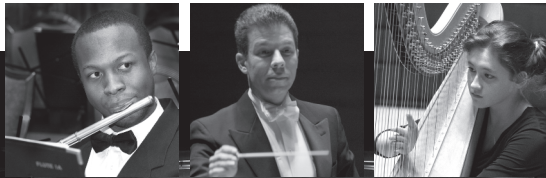
70th Annual Youth Festival Concert

SUNDAY • MAY 19, 2012 • 7:00 PM

Montgomery County Community College



Louis Scaglione • *Music Director & Conductor*
Gloria & William dePasquale • *Co-Artistic Advisors*



Philadelphia
Youth
ORCHESTRA

Information on the 2011–2012 season:
www.pyos.org • 215.545.0502

This season, 2011-2012, Tri-County Concerts Association proudly celebrates its 71st year as one of the region's most significant venues for chamber music. In December 1941, chamber music in the Philadelphia suburbs received a remarkable boost from Ellen Winsor and Rebecca Winsor Evans when the two sisters decided to sponsor the original Curtis String Quartet in a free public concert at Radnor Junior High School. An early program tells us that "its aim was to bring the spiritual peace and the beauty of music in the lives of our fellow-citizens who were living under the shadow of war; thus strengthening them with the knowledge that music is the great international language which unites all peoples in the common bond of friendship." The musicians were enthusiastically received and the Tri-County Concerts Association was successfully launched. Two years later, the fledgling organization held its first Youth Music Festival and assumed a vital position in the area's cultural life.

From the early 1950's to the late 1970's, the driving force behind the Tri-County Concerts Association was Mrs. Guida Smith. Her energies were devoted to bringing top musical artists to the community, as well as relatively unknown virtuosi who later became internationally renowned. In 1979 Jean Wetherill of Radnor assumed leadership of the Association. She fostered the organization's continued health during a period of transition. That year, the Association became a nonprofit corporation in order to strengthen its mission and its increasingly important fund-raising functions. When the Radnor Middle School underwent renovations in 1980, the concert series was relocated to Delaware County Community College. After a brief return to Wayne Auditorium in 1987, the series moved to Centennial Hall at Haverford College in 1989, then to the Main Line Unitarian Church in 1992 and now to our present location at Eastern University since 1999.

Throughout these changes, Tri-County upheld its tradition of the highest musical standards. Its roster of virtuoso performers includes Marian Anderson, Eugene Istomin, Vladimir Sokoloff, Paul Badura-Skoda, the Budapest and Juilliard String Quartets, Leontyne Price, Rosalyn Tureck, Cynthia Raim, and Peter Wiley, among others. In recent years, Tri-County has focused primarily on "Emerging Artists," one part of its heritage. From the start, Tri-County has showcased brilliant young musicians who were on their way to distinguished professional careers. When he performed with Tri-County, William Kapell was only twenty, Gil Shaham was seventeen, and Pamela Frank was twenty-two. Local stars who appeared with us early in their careers include the legendary Anna Moffo, as well as Marcantonio Barone, Mimi Stillman, and Eric Owens. We carry on this fine tradition today by continuing to bring you outstanding young musicians in our chamber series.

No less important is Tri-County Concerts' Youth Festival, which has been a stepping-stone to achievement for many of the thousands of young musicians who have participated. Former winners have established national and international careers as soloists and as members of major symphony orchestras. Opera stars Anna Moffo and Clamma Dale first received recognition in Tri-County's Youth Festival. At present, other winners hold positions as principals in the Pittsburgh, Cincinnati, Houston, Indianapolis, Los Angeles, and Oregon Symphony Orchestras, and four have seats in the Philadelphia Orchestra.

With both our Emerging Artists Series and our Youth Festival, we afford our audiences the opportunity to see and hear tomorrow's stars.

Welcome Tri-County Concerts Association
Emerging Artists Series



The
EASTERN EXPERIENCE:
where music is for life!

- Music Education
- Church Music
- Performance
- Composition/
Electronic Music
- Individualized Majors
- Music Scholarships

Yearly musical and theatre
productions, touring
ensembles and recordings.



*A Christian University that transforms lives
through its Undergraduate, Graduate,
Professional, Urban, Seminary and
International Programs*

Learn more.
Contact Eastern University today.
800.452.0996 • www.eastern.edu

OUR PURPOSE

For seventy-one years, the Tri-County Concerts Association has served the Chester, Delaware, and Montgomery County communities by fostering the performance and appreciation of the highest quality solo and ensemble chamber music. It is the only chamber music series in the area run by an independent community board. Tri-County Concerts is unique in presenting recitals both by emerging professional artists and by promising local youths.

SERVING OUR COMMUNITY

Part of the Tri-County Concerts' mission is to reach a widely varied audience with subsidized ticket arrangements. In this manner, many young people have received their introduction to chamber music, conservatory students their inspiration, and members of retirement communities sheer musical enjoyment in exposure to world-class artists. Ticket prices are kept low to enable families to share a rich cultural experience.

VIRTUOSO PERFORMANCES SINCE 1941

1941	Curtis String Quartet	1986	Cynthia Raim, <i>piano</i>
1942	William Kincaid, <i>flute</i>	1987	Peter Wiley, <i>cello</i>
1943	William Kapell, <i>piano</i>	1989	Gil Shaham, <i>violin</i>
1944	Marian Anderson, <i>contralto</i>	1989	Pamela Frank, <i>violin</i>
1946	Budapest String Quartet	1991	Gyorgy Sandor, <i>piano</i>
1946	Samuel Mayes, <i>cello</i> , and Vincent Persichetti, <i>piano</i>	1993	Peabody Trio
1947	Roland Hayes, <i>tenor</i>	1995	Meng-Chieh Liu, <i>piano</i> Brentano String Quartet
1949	Juilliard String Quartet	1996	Ying Quartet
1952	M. Horszowski, <i>piano</i>	1997	Juliette Kang, <i>violin</i>
1953	Anna Moffo, <i>soprano</i>	1998	Alexander Shtarkman, <i>piano</i>
1954	Paul Badura-Skoda, <i>piano</i>	1999	Jason Vieaux, <i>guitar</i> Alon Goldstein, <i>piano</i>
1955	Joseph Szigeti, <i>violin</i>	2000	Sari Gruber, <i>soprano</i>
1956	Eugene Istomin, <i>piano</i>	2001	Eric Owens, <i>basso</i>
1957	Leontyne Price, <i>soprano</i>	2001	Reiko Watanabe, <i>violin</i>
1958	Guiomar Novaes, <i>piano</i>	2002	Sergey Schepkin, <i>piano</i> Mimi Stillman, <i>flute</i>
1960	Rosalyn Tureck, <i>piano</i>	2002	Sergey Schepkin, <i>piano</i> Mimi Stillman, <i>flute</i>
1963	Ruggiero Ricci, <i>violin</i>	2004	Shunsuke Sato, <i>violin</i>
1964	Hans Richter-Haaser, <i>piano</i>	2006	Matthew Bengtson, <i>harpsichord and piano</i>
1966	Benita Valente, <i>soprano</i>		
1971	Balsam, Kroll & Heifetz Trio		
1972	Masuko Ushioda, <i>violin</i>		
1973	Orlando Cole, <i>cello</i> , and Vladimir Sokoloff, <i>piano</i>		
1974	Gyorgy Sandor, <i>piano</i>		
1976	Clamma Dale, <i>soprano</i>		
1981	Katherine Ciesinski, <i>soprano</i>		
1982	David Wetherill, <i>French horn</i>		
1983	The Ridge String Quartet		

50TH ANNIVERSARY GALA PERFORMANCE

Rosalyn Tureck, *piano*
 Alan Stepansky, *cello*
 Fei-Ping Hsu, *piano*
 Timothy Baker, *violin*
 James Barbagallo, *piano*
 Marcantonio Barone, *piano*
 Deborah Carter, *flute*
 David Hamilton, *tenor*



Temple University's Boyer College of Music and Dance offers a diverse curriculum, wide array of degree programs and exemplary faculty, preparing students for careers as educators, performers, composers and scholars.

- > Degree programs in instrumental studies, jazz studies, education, theory, therapy, choral conducting, keyboard, composition, history, voice and opera.
- > Annual orchestra and jazz band performances at Lincoln Center, Carnegie Hall and Kimmel Center for the Performing Arts.
- > Distinguished faculty includes members of The Philadelphia Orchestra as well as many other noted recording and performing artists.


Cellist Rajli Bicoll performs with the Temple University Symphony Orchestra at the Annual Kimmel Center for the Performing Arts Concert.

BOYER

Photo by Jessica Griffin

For more information, please contact:
 215-204-6810 or music@temple.edu

www.temple.edu/boyer

 Boyer College
 of Music and Dance
 TEMPLE UNIVERSITY*
 Philadelphia, PA



Daria Rabotkina, winner of the 2007 Concert Artists Guild International Competition, has been lauded as "...a pianist full of fire and warmth" (The Plain-Dealer). Ms. Rabotkina's burgeoning career has already led to solo appearances with the San Francisco and New World Symphonies under the baton of Michael Tilson Thomas and with the Kirov Orchestra and Valery Gergiev in a four concert North American tour.

In the 2011-12 season, featured concerto performances include a return engagement with the Harrisburg Symphony (Rachmaninoff Concerto No. 1) and debuts with Michigan's Midland Symphony Orchestra (Schumann Concerto) and Texas' Victoria Symphony (Grieg). Recital highlights

include the Ravinia Festival's "Rising Stars" series, Chicago's PianoForte Salon Series, and Florida's Atlantic Music Center.

Recent concerto highlights include performances with the Montreal Symphony, Moscow State Symphony, Winnipeg Symphony, Jacksonville Symphony, Harrisburg Symphony, Orchestra London of Canada and the Kazan State Symphony, collaborating with conductors such as Vladimir Feltsman, Fabio Mechetti and Giancarlo Guerrero. Ms. Rabotkina has given recitals at the Kennedy Center, Weill Recital Hall at Carnegie Hall and Merkin Concert Hall in New York, the Moscow Tchaikovsky Conservatory and in Denmark, Switzerland and Japan. Festival appearances abroad include Russia's White Nights Festival, Finland's Kuhmo Festival, France's Chopin Festival, Copenhagen's Summer Festival and Germany's MusikFest in Kreuth. In the US, Ms. Rabotkina has appeared at Music Academy of the West where she studied with Jerome Lowenthal and PianoSummer in New Paltz with Vladimir Feltsman.

In addition to her October 2007 victory at the CAG Competition, Ms. Rabotkina has garnered competition prizes at the Virtuosi per Musica di Pianoforte in the Czech Republic, Tbilisi Competition in Georgia, Jacob Flier Piano Competition in New Paltz, Sendai Competition in Japan, World Piano Competition in Cincinnati, Jacksonville Competition in Florida and the Montreal International Musical Competition. In March 2009, St. Vincent College awarded her the inaugural Bronder Prize for Piano, named for the founder of the school's venerable concert series.

Daria Rabotkina was born in Kazan, Russia, in to a family of musicians and gave her first solo recital at the age of ten. Her first musical steps were guided by her parents, Guzel Abdoullina and Sergei Rabotkin, both outstanding pianists, and Nora Kazachkova at the Special Music School in Kazan.

She earned Bachelor's and Master's of Music degrees from Mannes College of Music in New York City where she studied with Vladimir Feltsman and was coached by Leon Pommers, Pamela Frank, Todd Phillips, Timothy Eddy and Jacob Lateiner. She has participated in master classes with Earl Wild, Edward Aldwell, Eteri Andjaparidze, Andras Schiff and Richard Goode. Ms. Rabotkina has nearly completed a doctorate degree from the Eastman School of Music, where she is a "Liberace Scholar," under the tutelage of Nalya Antonova.

SUNDAY • OCTOBER 23, 2011 • 2:30 P.M.

Daria Rabotkina, *piano*

Six Moments Musicaux, Op.94	Franz Schubert (1797-1828)
<i>Moderato</i>	
<i>Andantino</i>	
<i>Allegro moderato</i>	
<i>Moderato</i>	
<i>Allegro vivace</i>	
<i>Allegretto</i>	

Chaconne in D minor from Violin Partita No.2, arranged by Busoni	J. S. Bach (1685 – 1750)
--	-----------------------------

• INTERMISSION •

Selections from Romeo and Juliet: Ten Pieces for Piano, Op. 75	Sergei Prokofiev (1797-1828)
<i>Juliet as a Young Girl</i>	
<i>Masquers</i>	
<i>Montagues and Capulets</i>	
<i>Friar Laurence</i>	

Pavane pour une infant defunte	Maurice Ravel (1875-1937)
--------------------------------	------------------------------

Prelude for the Left Hand, Op. 9	Alexander Scriabin (1872-1915)
----------------------------------	-----------------------------------

Piano Sonata No. 2, Op. 36	Sergei Rachmaninoff (1873 – 1943)
<i>Allegro agitato</i>	
<i>Non allegro</i>	
<i>Allegro molto</i>	

Steinway piano selected from Jacobs Music Company

Daria Rabotkina is a winner of the Concert Artists Guild International Competition. Ms. Rabotkina appears by special arrangement with Concert Artists Guild, 850 Seventh Ave., PH-A, New York, NY 10019
www.concertartists.org

This performance was supported in part by the Pennsylvania Council on the Arts, a state agency funded by the Commonwealth of Pennsylvania and the National Endowment for the Arts, a federal agency.



Pianist Svetlana Smolina, a native of Nizhny-Novgorod, Russia, began her keyboard studies with Natalia Fish at the Balakirev Music College. By the time she graduated in 1995, Ms. Smolina had already won several national and international piano competitions, performed concertos with the Nizhny Novgorod Symphony, participated at the Sakharov International Music Festival, given recitals in Italy, Japan and Denmark and was the recipient of the New Names scholarship project. Following her acclaimed surprise appearance at the White Nights Festival in June 1995, she was invited to study with famed pianist Alexander Toradze at his South Bend piano studio at Indiana University.

From 1998 through 2000, additional studies followed with Eugene and Olga Mogilevsky at the Brussels Royal Conservatory in Belgium. Ms. Smolina's other festival appearances include the Hollywood Bowl Festival (Los Angeles); Mikkeli Festival (Finland); Rotterdam Philips Gergiev Festival (Holland); Edinburgh Festival (with a live BBC broadcast); Ravinia Festival Rising Stars (Chicago); Settimane Musicali di Stresa (Italy); and the New Jersey Symphony's Rachmaninoff Festival. She has performed solo and chamber music at Carnegie Hall, Royal Opera House Covent Garden (London), Mariinsky 3 Concert Hall, Tchaikovsky Moscow Conservatory Hall, Teatro Lyrico (Milano), Cliburn Concert Series (Fort Worth, TX) and the Kravis Center (Palm Beach, FL). In September 2005 her CD recording of Stravinsky's *Les Noces* with Valery Gergiev was released to critical acclaim on the Decca/Philips label.

In addition to her solo accomplishments, Svetlana Smolina and her duo partner Maxim Mogilevsky are winners of the prestigious Murray Dranoff International Duo Piano Competition in Miami, Florida. They also received two special prizes: the Audience Favorite Prize and the Casadesus Prize for the best interpretation of the Casadesus Duo Piano Concerto. The prize also included an appearance with the Florida Philharmonic Orchestra, recitals at the University of Miami, and numerous engagements in Europe and the United States.

This past summer Ms. Smolina appeared in the iPalpiti Festival of International Laureates in Los Angeles, making her debut at Walt Disney Concert Hall with the iPalpiti Orchestra (Eduard Schmieder, conductor) and in solo and chamber concerts. She also served on the piano faculty of the Philadelphia International Music Festival (PIMF) and at the Mozarteum Summer Academy in Salzburg, Austria. In the fall of 2011, Ms. Smolina was named as the Samuel Barber Artist-in-Residence at West Chester University's School of Music.

Svetlana Smolina received her B.M. from the Oberlin Conservatory of Music, and her M.M. from Bowling Green State University. In 2008, Ms Smolina received her Doctorate in Piano Performance at the University of Michigan, where she studied with Arthur Greene.

SUNDAY • FEBRUARY 5, 2012 • 2:30 P.M.

Svetlana Smolina, *piano*

Klavierstücke in E Flat Major D. 946, No. 2	Franz Schubert (1797 – 1828)
Selection from Preludes, Op. 28	Frederic Chopin (1810 - 1849)
Scherzo No. 2 in B Flat minor, Op. 31	Frederic Chopin (1810 - 1849)
Liebestraum No. 3	Franz Liszt (1811 – 1886)
Mephisto Waltz No. 1	Franz Liszt (1811 – 1886)
• INTERMISSION •	
Pletnev Selections from Concert Suite from the Ballet "Nutcracker"	P. I. Tchaikovsky (1840 – 1893)
Sonata No.1 in D minor, Op. 28	Sergei Rachmaninoff (1873 – 1943)

Steinway piano selected from Jacobs Music Company

This performance was supported in part by the Pennsylvania Council on the Arts, a state agency funded by the Commonwealth of Pennsylvania and the National Endowment for the Arts, a federal agency.



Praised by *The New Yorker* as “a fresh and vital young participant in what is a golden age of American string quartets,” the Daedalus Quartet has established itself as a leader among the new generation of string ensembles. In the ten years of its existence the Daedalus Quartet has received plaudits from critics and listeners alike for the security, technical finish, interpretive unity, and sheer gusto of its performances.

The *New York Times* has praised the Daedalus Quartet’s “insightful and vibrant” Haydn, the “impressive intensity” of their Beethoven, their “luminous” Berg, and the “riveting focus” of their Dutilleux. The *Washington Post* in turn has acclaimed their performance of Mendelssohn for its “rockets of blistering virtuosity,” while the *Houston Chronicle* has described the “silvery beauty” of their Schubert and the “magic that hushed the audience” when they played Ravel, the *Boston Globe* the “finesse and fury” of their Shostakovich, the *Toronto Globe* and *Mail* the “thrilling revelation” of their Hindemith, and the *Cincinnati Enquirer* the “tremendous emotional power” of their Brahms.

Since its founding the Daedalus Quartet has performed in many of the world’s leading musical venues. In the United States and Canada these include Carnegie Hall, Lincoln Center, the Library of Congress, the Corcoran Gallery in Washington, D.C., and Boston’s Gardner Museum, as well as on major series in Montreal, Toronto, Calgary, Winnipeg, and Vancouver. Abroad the ensemble has been heard in such famed locations as the Musikverein in Vienna, the Mozarteum in Salzburg, the Concertgebouw in Amsterdam, the Cité de la Musique in Paris, and in leading venues in Japan.

The Daedalus Quartet has won plaudits for its adventurous exploration of contemporary music, most notably the compositions of Elliott Carter, George Perle, György Kurtág and György Ligeti. The 2010-2011 season featured the premiere of Richard Wernick’s String Quartet No. 8, commissioned for the Daedalus Quartet by the Bay Shore Schools Arts Education Fund and the Islip Arts Council. Daedalus will premiere a new quartet from Joan Tower, commissioned for them by Chamber Music Monterey Bay, in April 2012. The Quartet has also collaborated with some of the world’s finest instrumentalists: pianists Marc-André Hamelin, Simone Dinnerstein, Awadagin Pratt, Joyce Yang, and Benjamin Hochman; clarinetists Paquito D’Rivera, David Shifrin, and Alexander Fiterstein; and violists Roger Tapping and Donald Weilerstein.

To date the Quartet has forged associations with some of America’s leading classical music and educational institutions: Carnegie Hall, through its European Concert Hall Organization (ECHO) Rising Stars program; and Lincoln Center, which appointed the Daedalus Quartet as the Chamber Music Society Two quartet for 2005-07. The Daedalus Quartet has been Columbia University’s Quartet-in-Residence since 2005, and has served as Quartet-in-Residence at the University of Pennsylvania since 2006. In 2007, the Quartet was awarded Lincoln Center’s Martin E. Segal Award. The Quartet won Chamber Music America’s Guarneri String Quartet Award, which funded a three-year residency in Suffolk County, Long Island from 2007-2010.

(cont. on page 16)

SUNDAY • MARCH 11, 2012 • 2:30 P.M.

Min-Young Kim, *violin*
Ara Gregorian, *violin*
Jessica Thompson, *viola*
Raman Ramakrishnan, *cello*

String Quartet in E-flat major, Op. 33, No. 2 “The Joke” (1781) F. J. Haydn
(1732-1809)

Allegro moderato, cantabile
Scherzo: Allegro
Largo sostenuto
Finale: Presto

First String Quartet (1978) Fred Lerdahl
(b. 1943)

• INTERMISSION •

String Quartet No. 14 in A-flat major, Op. 105 (1895) Antonín Dvořák
(1841-1904)

Adagio ma non troppo – Allegro appassionato
Molto vivace
Lento e molto cantabile
Allegro ma non troppo

The Daedalus Quartet is represented by:
BesenArts LLC
508 First Street, Suite 4W, Hoboken, NJ 07030-7823
www.BesenArts.com
www.daedalusquartet.com

This performance was supported in part by the Pennsylvania Council on the Arts, a state agency funded by the Commonwealth of Pennsylvania and the National Endowment for the Arts, a federal agency.



Praised for his “robust, handsome voice” (The Washington Post), baritone Jonathan Beyer was a National Finalist in the Metropolitan Opera National Council Auditions. In 2011, he won a First Prize from the George London Foundation and received The Musical Fund Society of Philadelphia Career Advancement Award. He has also captured the top prizes from the San Antonio Opera, the XIV Biennial Marguerite McCammon, the Irma M. Cooper, and Violetta DuPont Competitions, as well as the Marian Anderson Prize for Emerging Classical Artists. Among numerous other awards, he was also a winner of Astral Artists’ 2009 National Auditions.

Mr. Beyer premiered the role of Captain Gardiner in Jake Heggie’s *Moby-Dick* at Dallas Opera, a role he reprises for San Diego Opera in 2012. He recently performed Ramiro in Ravel’s *L’heure espagnole* for Oper Frankfurt, Schaunard in *La bohème* for both Hong Kong Opera and Austin Lyric Opera, Lescaut in *Manon* for Knoxville Opera, and Silvio in *I Pagliacci* for Opera Grand Rapids. He has appeared with Pittsburgh Opera, Chicago Opera Theater, Fort Worth Opera, Opera Santa Barbara, the Chautauqua Institution, the Tanglewood Music Center, Accademia Verdiana, and Teatro di Verdi. His wide-ranging operatic roles also include Marcello in *La bohème*, Germont in *La traviata*, Malatesta in *Don Pasquale*, Papageno in *Die Zauberflöte*, Count Almaviva in *Le nozze di Figaro*, Belcore in *L’elisir d’amore*, and Richard Nixon in John Adams’ *Nixon in China*.

Critically hailed for his performances of *Carmina Burana*, he has been featured as soloist in *Carmina* with both the Vermont Symphony and the Erie Philharmonic, and performed it at Lincoln Center with the National Chorale in 2011. He has also appeared as soloist with the Netherlands Radio Orchestra, Chicago Symphony Orchestra, The Philadelphia Orchestra, Pittsburgh Symphony, Indianapolis Symphony, Southwest Michigan Symphony, Lorin Maazel’s Chateauville Foundation, Chatam Baroque, Baton Rouge Symphony, and the Festival at Aix-en-Provence.

An avid recitalist, Mr. Beyer has collaborated with Mikael Eliassen, Martin Katz, Kristin Okerlund, Craig Rutenberg, and Brian Zeger, and participated in the Ravinia Festival’s Steans Institute. He has appeared on Lyric Fest’s song series in Philadelphia, and has given recitals through the Vocal Arts Society, Marilyn Horne Foundation, Chicago Cultural Center, Judith Raskin Foundation, Bertlesmann Foundation, Huntsville Chamber Music Guild, Pittsburgh Concert Society, Astral Artists, Marian Anderson Foundation, and the Over the Rainbow Foundation.

Engagements this season include Escamillo in *Carmen* for the Opera Company of Philadelphia, the Count in *Le nozze di Figaro* with Fort Worth Opera, Figaro in *Il bariere di Siviglia* with Boston Lyric Opera, Wagner in *Faust* at the Metropolitan Opera, and Ping in *Turandot* for Dallas Opera. He also performs Vaughn Williams Five Tudor Portraits with the Rochester Oratorio Society, Copland’s *American Songs* with the Fort Worth Symphony, Fauré’s *Requiem* with the Colorado Symphony, and a recital with the Carnegie Hall Foundation.

Mr. Beyer holds degrees from the Curtis Institute of Music and the Chicago College of Performing Arts at Roosevelt University.

SUNDAY • APRIL 15, 2012 • 2:30 P.M.

Jonathan Beyer, *baritone*
Mikael Eliassen, *piano*

- I.
Don Juan’s Serenade Op. 38 No. 1 P. I. Tchaikovsky
Whether day dawns Op. 47 No. 6 (1840-1893)
Only one who knows longing Op. 6 No. 6
As over the burning ashes Op. 25 No 2
- II.
Lonesome Man (Blue Mountain Ballads) Paul Bowles
(1910 – 1999)
Lonely People Jean Berger
(1909 – 2002)
Lonely Room (Oklahoma) Richard Rodgers
(1902 – 1979)
Someone to Watch Over Me (Oh Kay) George Gershwin
(1898 – 1937)
- III.
Entbietung Op. 2 No. 6 Alexander von Zemlinsky
O Blätter, dürre Blätter Op. 5. No. 3 (1871-1942)
Vor der Stadt Op. 7 No. 2
Meine Braut führ ich heim Op. 10 No. 4
- INTERMISSION •
- IV.
Don Quichotte à Dulcinée Maurice Ravel
1. Chanson Romanesque (1875-1937)
2. Chanson épique
3. Chanson à boire
- V.
Selections from Old American Songs Aaron Copland
The Dodger (1900-1990)
Simple Gifts
The Little Horses
Zion’s Walls
At the River
Ching a ring Chaw

Steinway piano selected from Jacobs Music Company

Jonathan Beyer is an Astral Artist

This performance was supported in part by the Pennsylvania Council on the Arts, a state agency funded by the Commonwealth of Pennsylvania and the National Endowment for the Arts, a federal agency.

DAEDALUS QUARTET

(cont. from page 12)

The Daedalus Quartet's debut recording, music of Stravinsky, Sibelius, and Ravel, was released by Bridge Records in 2006. A Bridge recording of the Haydn's complete "Sun" Quartets, Op. 20, was released on two CDs in July 2010. Future recordings, also for Bridge, include an album of chamber music by Lawrence Dillon (Fall 2010) and the complete string quartets of Fred Lerdahl (Fall 2011).

Among the highlights of the Daedalus Quartet's 2010-2011 season were performances at the Bravo! Vail Festival, the Chamber Music Society of Lincoln Center, The Philadelphia Chamber Music Society, Great Performers at Lincoln Center, the Miller Theatre at Columbia University, the University of Pennsylvania, the Yale Center for British Art, Cornell University, the Tilles Center for the Performing Arts, the Asheville Chamber Music Society, the Mobile Chamber Music Society, and the Islip Arts Council.

The award-winning members of the Daedalus Quartet hold degrees from the Juilliard School, Curtis Institute, Cleveland Institute, and Harvard University. Founding members violinist Min-Young Kim and cellist Raman Ramakrishnan grew up in East Patchogue, Long Island; they met violist Jessica Thompson, a Minneapolis native, at the Marlboro Festival. Violinist Ara Gregorian joined the Daedalus Quartet in early March, 2010.

Autowerks Ardmore Mercedes-Benz Specialists

*salutes the talented young musicians
in the Youth Festival*

Rick Touhill
General Manager

108 Cricket Avenue
Ardmore, PA 19003
(610) 642-4770
Fax (610) 645-9253

Main Line Conservatory of Music

19 West Lancaster Avenue, Ardmore, PA

610-642-8565



Founded 1967

**DID YOU KNOW THAT HUNGARY IS PERHAPS THE ONLY COUNTRY
IN THE WORLD WITH UNIVERSAL MUSIC LITERACY ?**

**THE SECRET TO THEIR SUCCESS IS A REVOLUTIONARY APPROACH TO MUSIC
EDUCATION PIONEERED BY ZOLTAN KODALY. THE KODALY MUSIC TRAINING
METHOD CAN DEVELOP FLUENCY IN READING AND WRITING MUSIC,
ENHANCE SIGHT READING, SIGHT SINGING TECHNIQUES AND PERFORMANCE,
AND MAKE MUSIC EDUCATION A JOYOUS EXPERIENCE.**

Joy Miller Kiszely, Director

Pianist, Graduate of Oberlin College, Indiana University,
Bloomington, Ind. Mozarteum, Salzburg, Austria

**Master Teacher of many prize-winning students in
major International and National Competitions**

**PROFESSIONAL PIANO INSTRUCTION ON ALL LEVELS AND
COMPREHENSIVE MUSICIANSHIP TRAINING
KODALY METHOD**

SPECIAL CLASSES FOR THE GIFTED

Grand Prizes, Gold, Silver and Bronze Medalists
2011 World Piano Competition, Cincinnati, Ohio



Bottom row: Dorsin Chang, Sophia Hu Rayleen Hu,
Dorkhan Chang, Stella Chen;
Top row: Suproteem Sarkar, Alexandra Cobourn,
Dr. Michael Sheadel, Joy Miller Kiszely, Brynn Elcock

610 642 8565

SUPPORT TRI-COUNTY CONCERTS

Community support makes this remarkable organization possible. Individuals and local businesses have been generous with both financial and in-kind gifts. Corporations and foundations, recognizing the unique benefits that a community-based cultural association can offer, have given their essential support to the organization.

PROGRAMS OF SUPPORT

Sponsor	\$2,500 and over
Benefactor	\$1,000 - \$2,499
Patron	\$500 - \$999
Donor	\$250 - \$499
Friend	\$100 - \$249
Contributor	up to \$99

Tri-County Concerts Association is a non-profit corporation, exempt from income taxes under Section 501 (c) (3) of the Internal Revenue Code. Contributions are tax-deductible under Section 170 (c) (1) to the extent permitted by law. Official registration and financial information concerning Tri-County Concerts Association can be obtained from the Pennsylvania Department of State from the Pennsylvania Department of State's web site at www.corporations.state.pa.us/corp/soskb/csearch.asp. Registration does not imply endorsement.

SPECIAL THANKS TO THE FOLLOWING SUPPORTERS



This project was supported by the Pennsylvania Council on the Arts, a state agency, through its regional arts funding partnership, Pennsylvania Partners in the Arts (PPA). State government funding for the arts depends on an annual appropriation by the Commonwealth of Pennsylvania and support from the National Endowment for the Arts, a federal agency. PPA is administered in this region by the Greater Philadelphia Cultural Alliance.

Additional support of the Pennsylvania Partners in the Arts (PPA) Partnership in Southeastern Pennsylvania is provided by PECO.

IN APPRECIATION 2010 - 2011

Tri-County Concerts Association thanks the following individuals and organizations for their generous contributions over the past year.

GOVERNMENT GRANT

The Pennsylvania Council on the Arts

FOUNDATIONS & CORPORATIONS

BNG Foundation
Ethel Sergeant Clark Smith
Memorial Fund
The Musical Fund Society of Philadelphia
FMC Corporation
Jacobs Music Company

SPONSORS (\$2,500 & over)

Anonymous

PATRONS (\$500-\$999)

W. Thomas Berriman
John Stamps
Pearl Z. Steinberg

DONORS (\$250-\$499)

Raymond and Bonnie Brebach
Marvin Knopp
Eleanor James
Rebecca J. Clement and
Robert A. Nicholas
Roger and Mary J. Whiteman

FRIENDS (\$100-\$249)

Anne Marie Bedford
Richard, Mindyjane, Bradley &
Austin Berman
Rose G. and John Hagopian
Mr. and Mrs. Thomas Lee
David and Laurel Mingle
Garrett G. and Eva Jui Molholt
Margaret Motl and Daniel Campos
Robert Rossi
Sherrill and Margaret Shaffer
Richard and Dorothy Singer
The Music Study Club
The Musical Coterie of Wayne

CONTRIBUTORS (up to \$99)

Anonymous
Lois L. Ache
Ted and Judith Beilman
Richard and Carolyn Hammond
Marie L. Sedlak Lupone
Rosemary Malatesta
The Morelli Family
Dr. and Mrs. Jack C. Rosenfeld
in honor of our son, David Rosenfeld
Barbara and Paul Schick

NOTE: This list acknowledges donations from October 15, 2010 to October 15, 2011. If a name has been omitted or misprinted, please accept our apologies and notify us by calling 610-649-2517.

OUR ADVERTISERS

ANANDA Acupuncture & Herbs
Astral Artists
Autowerks Motors
Dr. Robert Bedford, Alexander Technique
The Bryn Mawr Conservatory of Music
Delaware County Youth Orchestra
Eastern University
Main Line Conservatory of Music

Montgomery County Community
College, Lively Arts Series
The Nelly Berman School of Music
Philadelphia Sinfonia
Philadelphia Youth Orchestra
Temple University,
Esther Boyer College of Music

SPECIAL THANKS

We thank the many special individuals and organizations who supported our program in important ways, apart from financial contribution, in the past year.

Eastern University

Ron Matthews, Chair, Music Department
Colleen Bradstreet, Music Executary

Hayden Printing

Mary McKee
Lisa Ryan

Hollander Communications Group

Felice Barsky

Immaculata University

Donna M. Bohn, D.M.A. Chair, Music Department
Sr. Regina Foy, Associate Professor

Jacobs Music Company

Al C. and Gabrielle Z. Rinaldi
Mark Love, Senior Vice President

Malvern Preparatory School

President, Mr. James H. Stewart
Head of School, Rev. James R. Flynn, O.S.A
Board of Trustees
Jacqueline White, Chair, Fine Arts Department

Montgomery County Community College

Karen Stout, President
Helen Haynes, Director of Cultural Affairs
Brent Woods, Assistant Director of Cultural Affairs

BOARD OF DIRECTORS 2010-2011

PRESIDENT

Eleanor James

VICE PRESIDENT

Marvin Knopp

TREASURER

Richard I. Singer

SECRETARY

Rebecca J. Clement

Anne Marie Bedford
Matthew Bengtson
W. Thomas Berriman
Bonnie Brebach
Joy M. Kiszely
Jui-Lan Eva Lou
Robert V. Rossi
Barbara Schick
Sherrill Shaffer
John Stamps
Pearl Steinberg

Tri-County Concerts Association, Inc.

Box 222 • Wayne, Pennsylvania 19087

tricityconcerts@gmail.com
610.649.2517

www.tricityconcerts.org

· ALEXANDER TECHNIQUE ·



Musicians
in particular
benefit from a
course of study in
the Alexander
Technique taught
by a Certified
Alexander
Technique teacher.

The Alexander Technique offers a way to become sensitive to stress, with the goal of restoring suppleness and lightness and avoiding repetitive motion injuries.

- Discover how to improve your overall coordination for many years to come: standing balance, sitting balance, moving balance.
- Introduce into your daily activities safe, useful principles of body movements that promise outstanding results.
- Improve your self-image and decrease anxiety about future problems.

Dr. Robert M. Bedford
Professor of Piano
610.696.5765
www.bedford-alexander.com

A **ASTRAL ARTISTS**
*Guiding and promoting the nation's
most extraordinary emerging classical musicians*

Tickets & Info: 215.735.6999 AstralArtists.org

*The essentials of a good life:
good music & good health.*

Ananda Acupuncture & Herbs

YOUTH FESTIVAL WINNERS



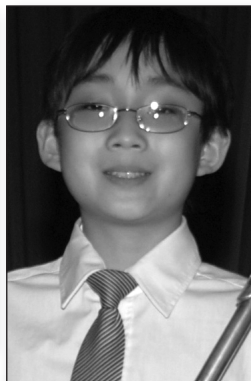
JKL TRIO



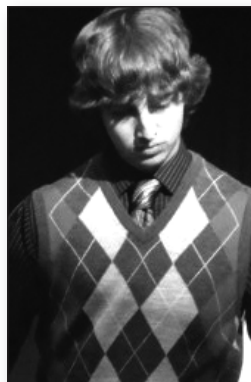
CHARLOTTE HIGGINS
& AISH NARAYAN



TEMPLE PREP TRIO



OLIN WEI



JUSTIN THOMAS
STERCHELE



JEFFREY HAN

2011 YOUTH FESTIVAL WINNERS

SENIOR ENSEMBLE

- First Place Temple Prep Trio: Amy Semes, violin;
Bihn Park, cello; Sukmin On, piano
- Second Place Melrose Trio: Lijia Xie, violin; Lynn Yip, cello;
Jean Lin, piano
- Honorable Mention Flute duo:
Brianna Whitton and Vanessa Walker

JUNIOR ENSEMBLE

- First Place JKL Trio: Amy Li, violin;
Seyoung Kim, cello; Mason Jiang, piano
- Honorable Mention String quartet: Alicia Song, violin;
Miranda Jen, violin; Jessica Wang, viola;
Rachel Dichter, cello

SENIOR MUSICA DIVERSA

- First Place Justin Thomas Sterchele, marimba

JUNIOR MUSICA DIVERSA

- Honorable Mention Dean Maola, classical guitar

SENIOR PIANO

- First Place Jonathan Adler
- Second Place Peter Wang
- Honorable Mention Sarah Kim
- Honorable Mention Brynn Elcock
- Honorable Mention Kevin Zhang
- Honorable Mention Jeremy Yodh

JUNIOR PIANO

- First Place Janet Wu
- Second Place (tie) Rayleen Hu
- Second Place (tie) Daniel Xu
- Honorable Mention Nicholas Wu
- Honorable Mention Katherine A. Hung

SENIOR STRINGS

- First Place Jeffrey Han, cello
- Second Place Minzo Kim, cello
- Honorable Mention Edward Pyun, cello

(cont. on page 24)

JUNIOR STRINGS

First Place Jason C. S. Vassiliou, violin
 Second Place Brendan M. Buoni, cello
 Honorable Mention Derek Shan, violin
 Honorable Mention Anne Catherine Lin, cello

SENIOR VOCAL ENSEMBLE

First Place Vocal Duo: Charlotte Higgins, soprano, and
 Aish Narayan, mezzo-soprano

SENIOR VOICE

First Place Ellen Ford, soprano
 Honorable Mention Giulietta Fiore, mezzo-soprano
 Honorable Mention Julia Tyminski, soprano

JUNIOR VOICE

First Place Lauren Grajewski, mezzo-soprano
 Honorable Mention Celine Dugan, soprano

SENIOR WINDS

First Place Emily Blackman, clarinet
 Second Place Owen Phelan, clarinet
 Honorable Mention Anna Thompson, flute
 Honorable Mention Lavi Ben-Dor, flute

JUNIOR WINDS

First Place Olin Wei, flute
 Second Place Christopher Hayes, alto saxophone
 Honorable Mention Jonathan Choi, alto saxophone
 Honorable Mention Benedict Roemer, oboe



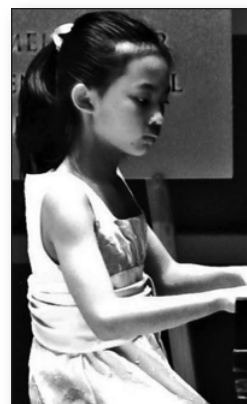
EMILY BLACKMAN



LAUREN GRAJEWSKI



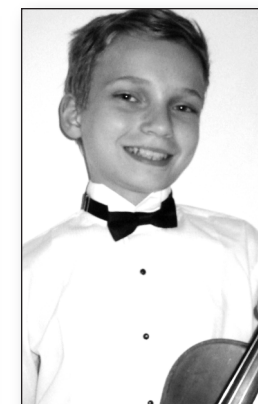
ELLEN FORD



JANET WU



JONATHAN ADLER



JASON C. S. VASSILIOU



The
BRYN MAWR CONSERVATORY OF MUSIC

700 Montgomery Avenue
 Bryn Mawr, Pennsylvania 19010
 610.525.1022

www.brynmawrconservatoryofmusic.com

KATHRYNA BARONE, *director*
 MARCANTONIO BARONE, *assistant director*

70TH ANNUAL YOUTH FESTIVAL

The Tri-County Concert Association's Annual Youth Festival has been a stepping stone to achievement for the thousands of young musicians who have participated since the competition's inception in 1943. The festival offers talented students an opportunity to audition before and receive critiques from professional judges. The winners receive scholarships for their musical training and the opportunity to perform before a discriminating audience.

2012 AUDITIONS

SATURDAY • APRIL 14, 2012 • IMMACULATA UNIVERSITY
(All instruments except Junior Piano)

SATURDAY • APRIL 21, 2012 • EASTERN UNIVERSITY *(Junior Piano)*

2012 WINNERS' RECITAL 70TH ANNUAL YOUTH FESTIVAL CONCERT

SATURDAY • MAY 19, 2012 • 7:00 P.M.

Montgomery County Community College
340 DeKalb Pike, Blue Bell, PA



Gary D. White
Music Director and Conductor

For season events, please visit our website
at www.philadelphiasinfonia.com
or call 215-351-0363

DCYO

Celebrating our 40th Season!

DELAWARE COUNTY YOUTH ORCHESTRA

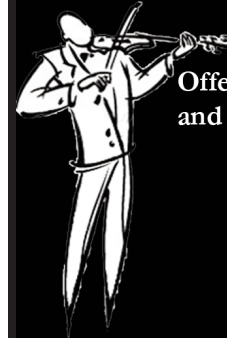
*For information on our 2011-2012 concert season
and spring 2012 auditions,
visit our website at www.dcyo.org*

BRAD SMITH, *Music Director*



The

Nelly Berman School of Music



Offering lessons in piano, voice, guitar, early childhood,
and all band and orchestra instruments! *Scholarships Available!

Exceptional Training

Exceptional Students

Students of the Nelly Berman School of Music have won numerous competitions and appeared in Carnegie Hall, The Kimmel Center, NPR's From the Top, and other prestigious venues worldwide

For more information, or to schedule lessons: nbsmusic@comcast.net • 610-896-5103
or visit our website at www.nbsmusic.com

ANNIVERSARY
25th
CELEBRATION
2011-2012
LIVELY
ARTS
SEASON

Montgomery County
Community College

Culture
speaks
**a Global
Language**

Saturday, October 1
Paul Taylor 2

Saturday, October 15
Billy Harper Quintet

Saturday, October 22
Baaba Maal
Tales From the Sahel

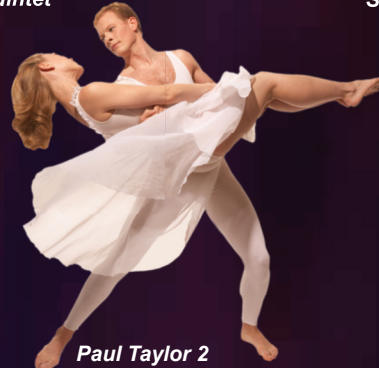
Saturday, October 28
Monnette Sudler's Guitar Summit
Pat Martino • Charles Ellerbee
Carlos Rubio • Tom Giacabetti
Gerald "Twig" Smith • Matt Davis



Dobet Gnahore



*Billy Harper
Quintet*



Paul Taylor 2

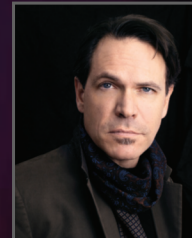
Friday, November 4
Writers' Conference
Junot Diaz

Saturday, November 5
Dobet Gnahore

Friday, November 18
Ragamala Dance Company

Saturday, December 3
Kurt Elling

Saturday, December 4
**Choral Society
of Montgomery County**
Performing Handel's MESSIAH



Kurt Elling

For info & tickets, visit www.mc3.edu/livelyarts